

**Govt. of India**  
**Ministry of Human Resource Development**  
**Dept. of School Education and Literacy**  
**Mid Day Meal Division**

**PAB-MDM meeting**  
**to consider and approve AWP&B 2018-19**

**(Date of the meeting: 18.05.2018)**



**APPRAISAL NOTE**

**State: Manipur**

**INDEX**

<b>Sl. No.</b>	<b>CHAPTER</b>	<b>Page no.</b>
<b>Overview</b>	Pre-requisite steps for submission of AWP&B	<b>2-3</b>
	Main Issues from Appraisal	
	Best practices	
<b>Part-A</b>	General Information	<b>4</b>
<b>Part-B</b>	Review of performance during 2017-18	<b>5-12</b>
<b>Part-C</b>	Recommendations of Appraisal team and quantification of variables for central assistance during 2018-19.	<b>13-15</b>
<b>Part-D</b>	Analysis sheet.	<b>16 onwards</b>

## Overview:

### Status on Pre requisite steps required for submission of AWP&B

Pre-requisite step	Status
Plan should be approved by SSMC Meeting	Yes
Release of funds through e-transfer from State / District to at least 50% schools	Yes
100% payment of cost of food grains made to FCI	No
100% payment of honorarium to cook-cum-helpers through e-transfer to their bank accounts.	Yes
Annual and Monthly data entry for the FY 2017-18 should be completed up to March 2018	Annual: 100% Monthly: 100%
Automated Monitoring system should have been operationalized	Not fully
Emergency Medical Plan on the lines of the contingency plan of Odisha.	No
Uploading of Plan through MDM-MIS	Yes
Action taken note on commitments given by the State Govt. during PAB Meeting of 2017-18	No
Action plan for the testing of food samples, Number of food samples tested by accredited labs and findings	No
Separate and detailed MME plan	No
Plan submitted duly signed by the Pr. Secretary / Secretary of the State/UT within the scheduled date.	Yes

**Issues:**

1. Decline in coverage of children in primary and upper primary categories.
2. Less coverage of working days (218 out of 228).
3. Less coverage of institutions (90%).
4. Delay in release of funds from State to school level (10 months); Balance of 1st and 2nd instalments still not released by State to schools.
5. Construction work of 1883 (63%) units of the sanctioned kitchen cum stores is still under progress. No progress in FY 2017-18.
6. Use of firewood as mode of cooking in 91% schools.

**Best Practices:**

1. Participation by the Mothers / Parents/ Community members in implementation of the scheme.
2. Kitchen gardens in 154 schools.

## Part-A : General Information

### Introduction:

The implementation of Mid Day Meal Scheme in Manipur started from November, 1995. As per the directives of the Hon'ble Supreme Court dated 20-4-2004 in W.P(C ) No. 196 of 2001, the State Government started providing cooked food to all the schools of primary stage (Govt. / Aided) w.e.f. 14-11-2004. The Scheme had been extended to 548 Upper Primary with primary classes w.e.f. 1st August, 2008 and later on 166 Upper Primary Schools without primary classes were also covered from April 2009 onwards.

### 1. Basic Information:

(Year 2017-18)

S. No.	INDICATORS	STATUS		
1. No. of Institutions		PRY	U PRY	TOTAL
i)	Existing Institutions	2857	966	3823
ii)	Covered during the year	2521	921	3442
2. No. of Children				
i)	Approved by MDM-PAB	143000	37688	180688
ii)	Enrollment as on 30.9.2017	145179	41325	186504
ii)	Average No. of children availed MDM during 01.04.2017 to 31.03.2018	121595 [84%]*	33979 [82%]*	155574 [83%]*
3. Coverage of children as per Quarterly Progress Report (QPR)				
i)	Average no. of children availed MDM as per QPR-1	123758 [85%]	35017 [85%]	158775 [85%]
ii)	Average no. of children availed MDM as per QPR-2	122050 [84%]	34071 [82%]	156121 [84%]
iii)	Average no. of children availed MDM as per QPR-3	119473 [82%]	33068 [80%]	152541 [82%]
iv)	Average no. of children availed MDM as per QPR-4	119709 [82%]	33189 [80%]	152898 [82%]
4. No. of Working Days				
i)	Approved for 4 quarters	228	228	
ii)	Covered during 4 quarters	218	218	
5. Per unit cooking cost Per child per day (in Rs.)				
	AVERAGE UNIT COOKING COST PCPD	4.13	6.18	
	State's contributions in cooking cost per child per day	0.41	0.62	

\*percentage to enrollment.

## **Part-B : Review of Performance in 2017-18 (01.04.17 to 31.03.2018)**

2. Based on the information provided by the State administration in its AWP&B 2018-19, the performance during 2017-18 (01.04.17 to 31.03.2018) was reviewed. The major issues in implementation during 2017-18 are summarized as under: -

### **2.0 Coverage of Institutions**

**Coverage in terms of no. of institutions.**

**Difference between Existing Vs No. of institutions covered (Achievement) –**

#### **i) PRIMARY**

The number of existing institutions	= 2857
Number of institutions covered during 01.04.17 to 31.03.18	= 2521 (88%)

#### **ii) UPPER PRIMARY**

The number of existing institutions	= 966
Number of institutions covered during 01.04.17 to 31.03.18	= 921 (95%)

### **2.1 Coverage of Children**

#### **2.1.1 Coverage against enrolment :**

**a) Primary - Coverage in terms of No. of children. Difference between Enrolment vs.**

**Average No. of Children Aailed MDM (Achievement) (Refer Table 2.5 of the Analysis Sheet).**

Total Enrolment as on 30.09.2017	= 145179
Average number of children aailed MDM during 01.04.17 to 31.03.18	= 121595 (84%)

The coverage at State level is well above the National average of 76%.

**b) Upper Primary: Coverage in terms of No. of children. Difference between Enrolment vs. Average No. of Children Aailed MDM (Achievement) – (Refer Table 2.6 of the Analysis Sheet).**

Total Enrolment as on 30.09.2017	= 41325
Average number of children aailed MDM during 01.04.17 to 31.03.18	= 33979 (82%)

Coverage of children at upper primary level in the State is well above the national average of 76%.

#### **2.1.2 Coverage against PAB-MDM approval :**

**a) Primary : Coverage in terms of No. of children. Difference between PAB Approval (Target) vs. Average No. of Children Availing MDM (Achievement) (Refer Table 2.3 of the Analysis Sheet).**

The number of children approved by MDM PAB for 2017-18 = 143000  
Average number of children availed MDM during 01.04.17 to 31.03.18 = 121595 (85%)

**b) Upper Primary: Coverage in terms of No. of children. Difference between PAB Approval (Target) Vs Average No. of Children Availing MDM (Achievement)**

*(Refer Table 2.4 of the Analysis Sheet).*

The number of children approved by MDM PAB for 2017-18 = 37688  
Average number of children availed MDM during 01.04.17 to 31.03.18 = 33979 (90%)

**2.1.3 No. of Meals: Difference between No. of meal to be served (Target) Vs. No. of meals Served (Achievement) - PY+U PY (Refer Table 2.7 & 2.8 of the Analysis Sheet).**

The number of meals to be served during 01.04.17 to 31.03.18 = **4.12 Crore**  
The number of meals served during 01.04.17 to 31.03.18 = **3.39 Crore (82%)**

**2.2 FOODGRAINS (PRIMARY + UPPER PRIMARY)**

**2.2.1 Level of Opening Balance as on 01.04.17: (Refer Table 3.2 of the Analysis Sheet).**

The State had opening balance of 1075.99 MTs (24%) against the total allocation of 4549.35 MTs for 2017-18 as on 1.4.17.

**2.2.2 Level of unspent balance as on 31.03.18: (Refer Table 3.3 of the Analysis Sheet).**

The State level closing balance as on 31.03.18 is 788.98 MTs (17%) against the allocation.

**2.2.3 Availability of Food grains: (01.04.17 to 31.03.18) : (Refer Table 3.5 of the Analysis sheet)**

State level availability as on 31.03.18 was 100% of the total allocation.

**2.2.4 Utilization of food grains: (Refer Table 3.7 of the Analysis sheet)**

An analysis of the utilization of food grains during 2017-18 shows that State has utilized 83% of the allocated food grains.

**2.2.5 Payment of cost of foodgrains to FCI: (Refer Table 3.9 of the Analysis sheet)**

The FCI has submitted bills for Rs. 104.20 lakhs during 1.4.2017 to 31.03.2018 towards cost of food grains. As per information provided by the State Government, State has made payment for Rs. 104.20 lakhs (100%) to the FCI.

## **2.3 COOKING COST (PRIMARY + UPPER PRIMARY)**

### **2.3.1 Level of Opening balance as on 01.04.17: (Refer Table 4.2.1 of the Analysis Sheet)**

The State had reported opening balance of Rs. 502.67 lakhs (27%) at the beginning of the financial year 2017-18 against allocation of Rs. 1877.60 lakhs.

### **2.3.2 Level of closing balance as on 31.03.18: (Refer Table 4.2.2 of the Analysis Sheet)**

The State had closing balance of Rs. 784.19 (42%) towards cooking cost as on 31.03.18.

### **2.3.3 Utilization of Cooking cost: (Refer Table 4.5 & 4.6 of the Analysis Sheet)**

Considering that whole of the year is over by 31.03.2018, the districts should have utilized almost 100% of the allocation of cooking cost. State level utilization is only Rs. 1551.92 lakhs (83%) against the allocation.

## **2.4 Reconciliation of utilisation and performance during 2017-18 (1.4.17 to 31.03.18)**

### **2.4.1 Mismatch in utilization of Food grains vis-à-vis cooking cost: (Refer Table – 5.1 of Analysis Sheet)**

Ideally the percentage utilization of cooking cost and food grains should tally with each other. The data furnished in the AWP&B reveals that there is no mismatch at State level in utilization of cooking cost (83%) and food grains (83%).

## **2.5 Cook-Cum-Helper (PRIMARY + UPPER PRIMARY):**

MDM-PAB had approved 7487 cook-cum-helpers to be engaged during 2017-18, the State has engaged 6545 (87%) cook-cum-helpers. The State has proposed to engage 7487 cook-cum-helpers during 2017-18. The State has utilized 87% of the allocated funds for payment of honorarium to cook cum helpers. (Refer Table – 6.2 of Analysis Sheet).

## **2.6 Utilization of MME (Refer Table – 7.2 & 7.3 of Analysis Sheet)**

Against the allocation of Rs. 46.96 lakhs as Central Assistance towards MME funds, the State has utilized Rs. 45.92 lakh (98%).

## **2.7 Utilization of Transportation Assistance (Refer Table – 8.2 & 8.3 of Analysis Sheet)**

Against the allocation of Rs. 107.82 lakhs towards Central Assistance towards funds for Transportation Assistance, the State has utilized Rs. 82.33 lakhs (76%) only.

## **2.8 Construction of Kitchen-cum-stores (Reference Table -9.1.2 of Analysis Sheet)**

Central assistance of Rs. 3631.77 lakhs has been released for construction of 2966 Kitchen-cum-Stores. Out of 2966 kitchen-cum-stores sanctioned till 2017-18, only 1083 (37%) have been constructed rest are in progress. The State has not proposed for any kitchen-cum-stores to be sanctioned this year.

## **2.9 Procurement of Kitchen devices (Reference Table -9.2.2 of Analysis sheet)**

Central assistance of Rs. 254.80 lakhs has been released towards procurement of 5096 (3639 new + 1457 replacement) units of kitchen devices during 2006-07 to 2017-18. The State has reported that out of these 3107 (61%) units have been procured and procurement of 1989 (39%) is in progress. 183 (new) units sanctioned in FY 2016-17 and 1650(replacement) units sanctioned in FY 2017-18 however, funds not released to State due to want of physical and financial progress report of 1989 units sanctioned earlier.

## **3. Data Entry Status on the MIS Web Portal**

For smooth functioning of MDMS, Ministry of HRD, MDM Division has developed web based monitoring system i.e. MDM-MIS in collaboration with NIC. In this web portal State/District/Block users have to make Annual and Monthly data entry. The State should monitor that the data is entered in timely manner by District/Block users into the portal. The Annual and monthly data entry status of the State are given below:-

### **3.1 Annual Data Entry:**

State has completed annual data entry for 100% schools for the year 2017-18. The district wise annual data entry status is given below:-



<b>FY-2017-18</b>					
<b>Annual Data Entry Status_MANIPUR</b>					
S. No.	District	Total Schools	Completed(Saved)	Pending	% Completed
1	BISHNUPUR	228	224	4	98%
2	CHANDEL	316	316	0	100%
3	CHURACHANDPUR	462	462	0	100%
4	IMPHAL EAST	427	426	1	100%
5	IMPHAL WEST	369	369	0	100%
6	SENAPATI	689	687	2	100%
7	TAMENGLONG	340	340	0	100%
8	THOUBAL	345	345	0	100%
9	UKHRUL	287	287	0	100%
	<b>Total</b>	<b>3463</b>	<b>3456</b>	<b>7</b>	<b>100%</b>
Source: <a href="http://www.trgmdm.nic.in">www.trgmdm.nic.in</a> as on 8 May'18 till 17:29 hrs					

### 3.2 Monthly data entry

Average monthly data entry status up to March, 2018 at State level is 100%. The details of district wise monthly data entry status are placed below:

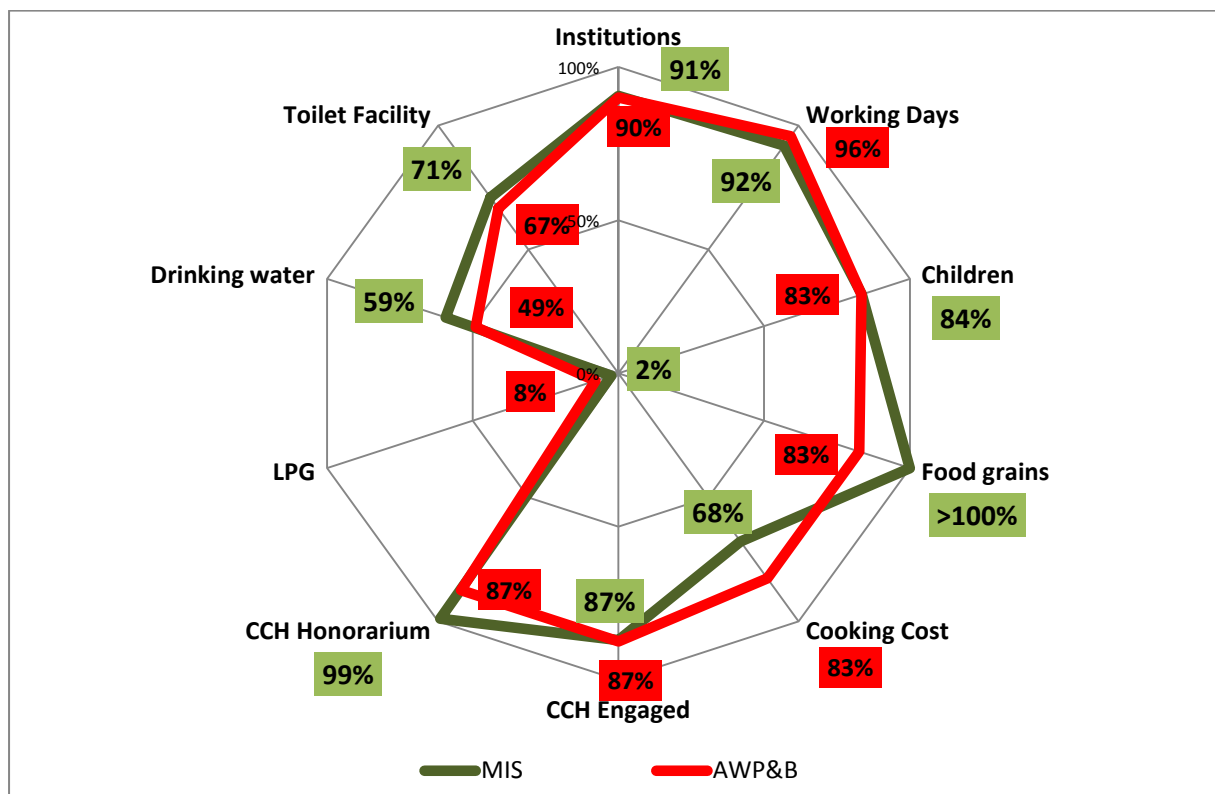
<b>FY 2017-18</b>															
<b>Monthly Data Entry Status_MANIPUR</b>															
S. No.	District	Total Schools	% April	% May	% June	% July	% Aug	% Sept	% Oct	% Nov	% Dec	Jan%	Feb %	Mar %	Average %
1	BISHNUPUR	228	98%	98%	98%	98%	98%	98%	98%	98%	98%	98%	98%	98%	98%
2	CHANDEL	316	100%	100%	100%	100%	100%	100%	100%	100%	100%	100%	100%	100%	100%
3	CHURACHANDPUR	462	100%	100%	100%	100%	100%	100%	100%	100%	100%	100%	100%	100%	100%
4	IMPHAL EAST	427	100%	100%	100%	100%	100%	100%	100%	100%	100%	100%	100%	100%	100%
5	IMPHAL WEST	369	100%	100%	100%	100%	100%	100%	100%	100%	100%	100%	100%	100%	100%
6	SENAPATI	689	100%	100%	100%	100%	100%	100%	100%	100%	100%	100%	100%	100%	100%
7	TAMENGLONG	340	100%	100%	100%	100%	100%	100%	100%	100%	100%	100%	100%	100%	100%
8	THOUBAL	345	100%	100%	100%	100%	100%	100%	100%	100%	100%	100%	100%	100%	100%
9	UKHRUL	287	100%	100%	100%	100%	100%	100%	100%	100%	100%	100%	100%	100%	100%
	<b>Total</b>	<b>3463</b>	<b>100%</b>	<b>100%</b>	<b>100%</b>	<b>100%</b>	<b>100%</b>	<b>100%</b>	<b>100%</b>	<b>100%</b>	<b>100%</b>	<b>100%</b>	<b>100%</b>	<b>100%</b>	<b>100%</b>
Source: <a href="http://www.trgmdm.nic.in">www.trgmdm.nic.in</a> as on 8 May'18 till 17:32 hrs															

### 3.3 Mismatch in Data from MIS and AWP&B

COMPONENT	MIS	AWP&B
Institutions	3463	3442
Working Days	210	218
Children	155799	155574
Food grains (MTs)	9452.31	3760.37
Cooking Cost (Rs. in lakhs)	1272.82	1551.92
CCH Engaged	6515	6545
CCH Honorarium (Rs. in lakhs)	740.98	654.50
LPG	93	300
Drinking water	2264	1871

Toilet Facility	2715	2545
-----------------	------	------

The graphical representation of the differences in data from MDM-MIS and as submitted by the State through Annual Work Plan & Budget is given below:



The State should take appropriate measures to reconcile the data on all the parameters as shown above.

### 3.4 Automated Monitoring System

District wise Meals Served on : 04 May'2018 Manipur								
S.No.	District	Total Schools	Reported Schools	% Reported Schools	Total Enrolment	Reported Schools Enrolment	Meals Served	Meals Served Percentage
1	CHURACHANDPUR	436	2	0%	32100	348	109	31.32%
2	IMPHAL WEST	372	1	0%	20293	108	68	62.96%
3	SENAPATI	669	4	1%	43057	470	258	54.89%
4	TAMENGLONG	352	25	7%	18435	1837	1452	79.04%
	<b>Total</b>	<b>1829</b>	<b>32</b>	<b>2%</b>	<b>113885</b>	<b>2763</b>	<b>1887</b>	<b>68.30%</b>

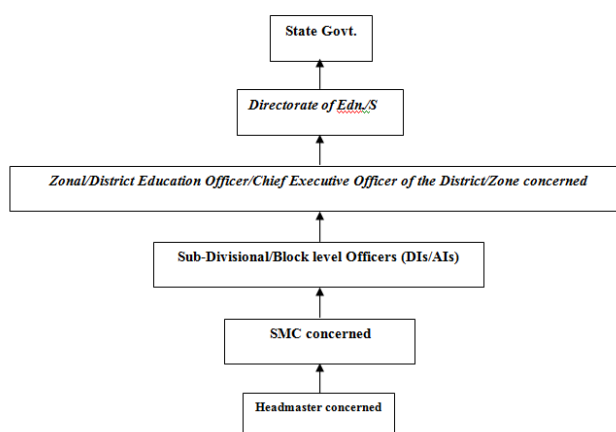
## 4. Release of funds

The Govt. of India released ad-hoc grant on 03/05/2017. As per the information provided by the State, ad-hoc grant was received at school levels on 26/03/2018. Balance of 1<sup>st</sup> installment and 2<sup>nd</sup> installment were released to State Govt. by GOI on 17/07/2017 and 22/03/2018, however the State

Govt. did not release the requisite grants to districts/block/schools. As per information received the fund is released from the State to the districts through e-transfer and the districts further release fund through e-transfer wherever possible.

## 5. Management Structure

State Government looks into the overall implementation and policy formulation while Directorate implements the Scheme at the District/Zonal level. The office of the ZEO/DEO implements the scheme at school level.



## 6. System for payment of cost of foodgrains to FCI

Presently, payment of food grains costs to FCI is done at State level only. Meetings are held atleast once in a quarter by the District Nodal Officers with FCI to resolve the issues relating to lifting, quality of food grains and payment of bills.

## 7. Menu

Sl. No.	Day	Menu
1	Monday	Rice + Dal + Local Chatni
2	Tuesday	Rice + Mixed Vegetable + Local chatni
3	Wednesday	Rice + (Dal+vegetable) + Local Chatni
4	Thursday	Rice + Dal + Local Chatni
5	Friday	Rice + Mixed Vegetable + Local chatni
6	Saturday	Rice +(Dal+vegetable) + Local Chatni

## 8. Community involvement

The community has been instrumental in partnering with the state government towards implementation of the scheme. The construction of kitchen-cum-stores is being entrusted to the SMC so that involvement of community members can be accounted. Meals are tasted by the School Authority, Cooks and Local members. The roster for community monitoring at school level is maintained in schools.

## **9. Capacity Building**

Periodical capacity building programmes are being conducted in all districts. Power point presentations on norm of cooking cost, hand washing of children, food grain norm, maintenance of MDM registers, tasting of food and need for community participation were shown in the training sessions.

## **10. Tasting of Meal**

Meals are tested by the teachers/parents and Cooks. Most of the schools are maintaining a tasting registers.

## **11. Grievance Redressal Mechanism**

Important telephone numbers of nearest Police, Health and others are displayed in the school campus.

## **12. Contingency Plan to avoid any untoward incident**

All the important phone numbers (e.g. Primary health center, Hospitals, Fire brigade etc.) have been printed on the walls of school building.

## **13. Social Audit**

The State has not undertaken the Social Audit yet. It shall be conducted twice in a year along with other schemes of the Education Department.

**-oOo-**

**Part-C : Recommendations of Appraisal Team for 2018-19**

No	Details		State's Proposal for FY 2018-19		Recommendations by Appraisal Team for FY 2018-19	
<b>1</b>	<b>No. of Children &amp; Institutions</b>					
	<b>Category</b>	<b>No. of institutions</b>	<b>No. of Children</b>	<b>No. of institutions</b>	<b>No. of Children</b>	
<b>A</b>	<b>Primary</b>					
<b>1.1</b>	Govt. + LB schools	2457	104273	2457	104273	
<b>1.2</b>	Govt. Aided	400	17322	400	17322	
<b>1.3</b>	Special Training Centres	0	0	0	0	
<b>1.4</b>	STC-NCLP	0	0	0	0	
<b>1.5</b>	Madrassa/Maqtabs	0	0	0	0	
	<b>Total (A)</b>	<b>2857</b>	<b>121595</b>	<b>2857</b>	<b>121595</b>	
<b>B</b>	<b>Upper Primary</b>					
<b>1.6</b>	Govt. + LB schools	792	27343	792	27343	
<b>1.7</b>	Govt. Aided	174	6636	174	6636	
<b>1.8</b>	Special Training Centres	0	0	0	0	
<b>1.10</b>	Madrassa /Maqtabs	0	0	0	0	
	<b>Total (B)</b>	<b>966</b>	<b>33979</b>	<b>966</b>	<b>33979</b>	
	<b>GRAND TOTAL (A) + (B)</b>	<b>3823</b>	<b>155574</b>	<b>3823</b>	<b>155574</b>	
<b>2</b>	<b>No. of Working days</b>					
<b>2.1</b>	Primary		227		227	
<b>2.2</b>	Upper Primary		227		227	
<b>3</b>	<b>No. of Cook-cum Helpers</b>					
<b>3.1</b>	Primary		7487		7487	
<b>3.2</b>	Upper Primary					
<b>4</b>	Kitchen-cum-stores		Saturated		Saturated	
<b>5</b>	Kitchen devices	New Schools	Nil		Nil	
		Replacement	Nil		Nil	

State: Manipur

**QUANTIFICATION OF CENTRAL ASSISTANCE FOR 2018-19**

**A. Food grains**

Sl. No.	Stage	No. of Children	No. of Working days	Quantity in MTs.
1	Primary (@ 100 gms per child per school day)	121595	227	2760.21
2	Up. Primary ( @150 gms per child per school day)	33979	227	1156.98
3	NCLP ( @150 gms per child per school day)	0	0	0
4	<b>Drought</b>			
4.1	Primary			
4.2	Upper Primary			
<b>TOTAL</b>		155574		3917.19

**B. Cost of Foodgrains, Cooking cost, Transport Assistance, Hon. to cook-cum-helpers and Management Monitoring and Evaluation (MME)**

Sl. No.	Component/norm	Amount admissible
		(Rs. in lakh)
1	2	3
<b>Primary</b>		
1	Cost of Food grains @ Rs. 3000/- per MT for 2760.207 MT rice	82.81
2	<b>Unit Cooking Cost- Rs. 4.13 per day / per child for 121595 children for 227 days</b>	
2.1	Central Share @ Rs. 3.72 per child/day	1026.80
2.2	Minimum Mandatory State Share @ 0.41 per day/per	113.17
3	Transportation Cost @ Rs. 2370.00 Per MT food grains (121595 x 227 days x 0.0001 MT x Rs. 2370.00)	65.42
4	<b>Honorarium for cook cum Helper</b>	
4.1	Central Share - (7487 x Rs.900x 10 months)	673.83
4.2	Minimum Mandatory State Share - (7487 x Rs. 100 x 10 months)	74.87
5	Management Monitoring and Evaluation (MME) @ 1.8% of the i) Cost of food grains ii) Cooking cost iii) Cost of transportation and iv) Honorarium to cook – cum-helpers	33.28
<b>TOTAL - {1+2.1 +3+4.1+5}</b>		1882.13
<b>Upper Primary</b>		

6	Cost of Foodgrains @Rs. 3000/- per MT for 1156.98 MT rice	34.71
7	<b>Unit Cooking Cost 6.18 per day / per child for 33979 children for 227 days</b>	
7.1	<b>Central share @ Rs.5.56 per child/day</b>	428.86
7.2	<b>Minimum Mandatory State Share @ Rs.0.62 per child/day</b>	47.82
8	<b>Transportation cost @ Rs. 2370.00 Per MT food grains</b> (33979 x 227 days x 0.00015 x 2370)	27.42
9	<b>Honorarium to cook cum Helper (Included in primary)</b>	
10	Management Monitoring and Evaluation (MME) @ 1.8% of the 1) Cost of food grains 2) Cooking cost 3) Cost of transportation and 4) Honorarium to cook – cum-helpers	8.84
	<b>TOTAL - {6+7.1 +8+9.1+10}</b>	499.82
	<b>Grand Total (Primary + Upper Primary)</b>	2381.95

C. Drought : NIL

D. Non-recurring : NIL

E. **Total Requirement of Funds for 2017-18**

(Rs. in lakh)

Component		As per existing norms	
		Centre	Minimum mandatory State share
Recurring	Normal	2381.95	235.86
	Drought	0	0
Non- recurring		0	0
<b>Total</b>		2381.95	235.86

--oOo--